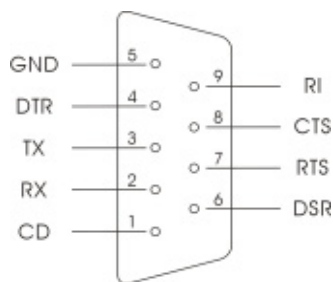


Windows NT

1. Power off computer, insert the serial card into PCMCIA socket, and then boot into Windows NT, the serial card will be detected and recognized as a COM port automatically.
2. You can change the settings of the COM port from “Ports” icon in “Control Panel”. For help with the Settings dialog box, click Help or press F1 while using the dialog box.
 - The COM port or I/O port address: select the port the serial card will be assigned to.
 - The IRQ number: select the IRQ number the serial card will be assigned to.

Pin Assignment



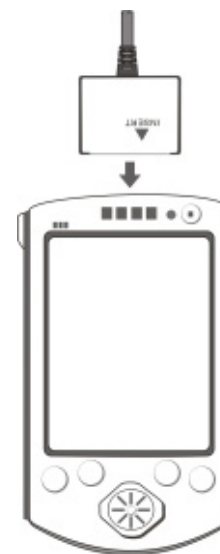
Pin No.	Pin Assignment	Description
1	CD	Carrier Detect
2	RX	Received Data
3	TX	Transmitted Data
4	DTR	Data Terminal Ready
5	GND	Ground
6	DSR	Data Set Ready
7	RTS	Request to Send
8	CTS	Clear to Send
9	RI	Ring Indicator

CF Serial Card - Single Port *Installation Guide*

For Pocket PCs, Windows CE Devices

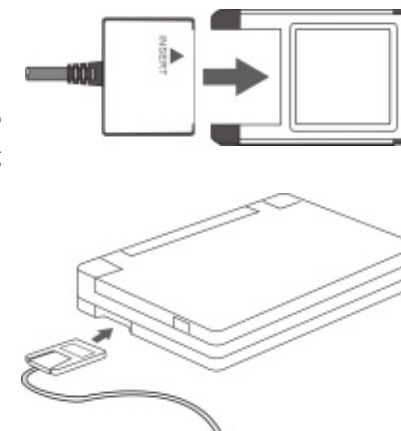
Note: This CF Serial Card only works with Windows CE3.0 (or higher version) devices, earlier version of Windows CE systems are not supported.

1. Insert the card into your mobile device. Do not insert the card upside down.
2. There is no device driver is needed for the CF Serial card, the card should be detected and installed on the mobile device automatically.



For Windows-based Notebooks

1. Plug the card into the PC Card expansion adapter. Do not insert the card upside down.
2. For Windows NT, insert the combined unit into the PCMCIA socket of notebook before turning on the computer.
3. For all other Windows systems, insert the combined unit into the PCMCIA socket of notebook after boot into the operating system.
4. Refer to the related operating system to install the device driver.

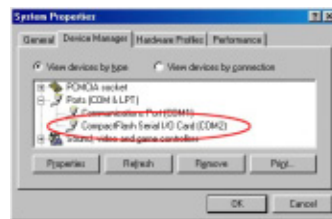


Windows 95/98

The following installation procedures are extracted from the Windows 98 installation. The installation for Windows 95 is almost same.

1. After the card is inserted, the “Add New Hardware Wizard” appears, click *Next*.
2. Select “Search for the best driver for your device”, and click *Next*.
3. Select “Floppy disk drives”, insert the device driver diskette into floppy drive, and click *Next*.
4. Windows will find a driver from the diskette, make sure the file that Windows found is “A:\CFCOM.INF”, click *Next*.
5. After the necessary files are copied into hard disk (you may need the Windows 98 CD to copy the related serial driver), click on *Finish*. The installation is complete.
6. Check “Device Manager” to ensure the following device is installed without error:

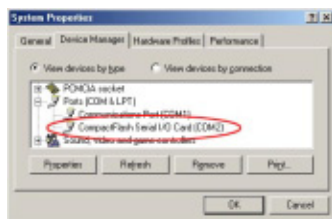
- CompactFlash Serial I/O Card (COMn): installed under “Ports (COM&LPT)”. (The n can be 1~4.)



Windows Me:

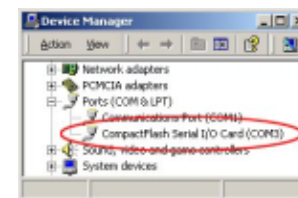
1. After the card is inserted, the “Add New Hardware Wizard” appears.
2. Insert the device driver diskette into floppy drive, and then select “Automatic search for better driver (Recommended)”, and click *Next*.
3. Windows will find device driver from the diskette, and install it automatically.
4. After the necessary files are copied into hard disk (you may need the Windows Me CD to copy the related serial driver), click on *Finish*. The installation is complete.
5. Check “Device Manager” to ensure the following device is installed without error:

- CompactFlash Serial I/O Card (COMn): installed under “Ports (COM&LPT)”. (The n can be 1~4.)



Windows 2000

1. After the card is inserted, the “Found New Hardware Wizard” appears, click *Next*.
2. Select “Search for a suitable driver for my device”, and then click *Next*.
3. Only select “Floppy disk drives”, leave the check box of the other locations be empty (don't select them). Insert the device driver diskette into floppy drive, and click *Next*.
4. Windows will then find a driver from the diskette, make sure the file is “A:\CFCOM.INF”, and then click *Next*.
5. After the necessary files are copied into hard disk (you may need the Windows 2000 CD to copy the related serial driver), click on *Finish*. The installation is complete.
6. Check “Device Manager” to ensure the following device is installed without error:
 - CompactFlash Serial I/O Card (COMn): installed under “Ports (COM&LPT)”. (The n can be 1~4.)



Windows XP

1. After the card is inserted, Windows will find a new hardware. Wait for few seconds, the “Found New Hardware Wizard” appears.
2. Insert the device driver diskette into floppy drive, select “Install the software automatically (Recommended)”, click *Next*.
3. Windows will find the device driver from the diskette, when it prompts “The software has not passed Windows Logo testing....”, click *Continue Anyway* to continue the installation.
4. After the necessary files are copied into hard disk, click on *Finish*. The installation is complete.
5. Check “Device Manager” to ensure the following device is installed without error:

- CompactFlash Serial I/O Card (COMn): installed under “Ports (COM&LPT)”. (The n can be 1~4.)

