

*Single Port  
Serial PC Card*

*User Manual*



## FCC COMPLIANCE STATEMENTS

This equipment has been tested and found to comply with the limits for a Class B digital device, pursuant to Part 15 of the FCC Rules. These limits are designed to provide reasonable protection against harmful interference in a residential installation. This equipment generates, uses and can radiate radio frequency energy and, if not installed and used in accordance with the instructions, may cause harmful interference to radio communications. However, there is no guarantee that interference will not occur in a particular installation. If this equipment does cause harmful interference to radio or television reception, which can be determined by turning the equipment off and on, the user is encouraged to try to correct the interference by one or more of the following measures:

Reorient or relocate the receiving antenna.

Increase the Distance between the equipment and receiver.

Connect the equipment into an outlet on a circuit different from that to which the receiver is connected.

Consult the dealer or an experienced radio/TV technician for help.

### CAUTION

CHANGE OR MODIFICATIONS NOT EXPRESSLY APPROVED BY PARTY RESPONSIBLE FOR COMPLIANCE COULD VOID THE USER AUTHORITY TO OPERATE THE EQUIPMENT.

## TRADEMARKS

PCMCIA is a trademark of Personal Computer Memory Card International Association.

MS-DOS, Windows, and Windows 95/98/Me/NT/2000 are trademarks of Microsoft Corporation.

\*All of the third-party brands and names are the property of their respective owners.

## CONTENTS

SOFTWARE INSTALLATION FOR WINDOWS 95/98 .....	1
SOFTWARE INSTALLATION FOR WINDOWS Me .....	3
SOFTWARE INSTALLATION FOR WINDOWS 2000 .....	5
SOFTWARE INSTALLATION FOR WINDOWS NT .....	7
SOFTWARE INSTALLATION FOR DOS/WINDOWS 3.1 .....	9
PIN ASSIGNMENT .....	11



## SOFTWARE INSTALLATION FOR WINDOWS 95/98

The following installation procedures are extracted from the Windows 98 installation. The installation for Windows 95 is almost same.

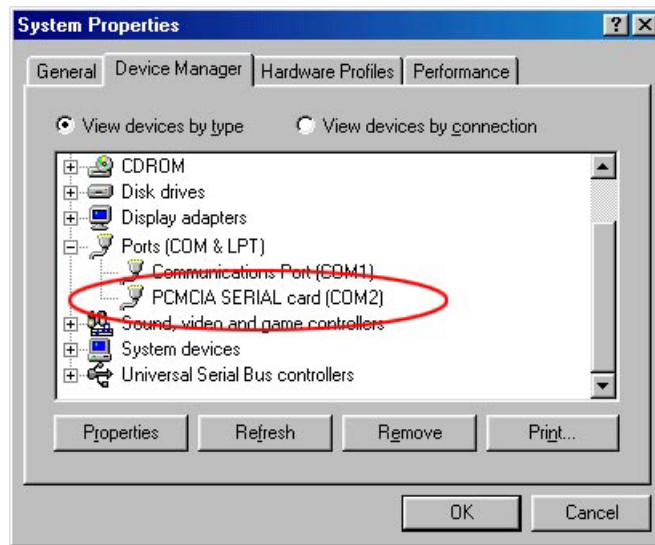
1. Insert the Serial PC Card into the PCMCIA socket, the “Add New Hardware Wizard” dialog box appears, click *Next*.
2. Check “Search for the best driver for your device”, and click *Next*.
3. Check “Floppy disk drives”, insert the Serial PC Card device driver diskette into your floppy drive, and click *Next*.
4. Refer to the following picture, make sure the file that Wizard found is “A:\PCMCOM.INF”, click *Next*.



5. After the necessary files are copied into hard disk, click on *Finish*.



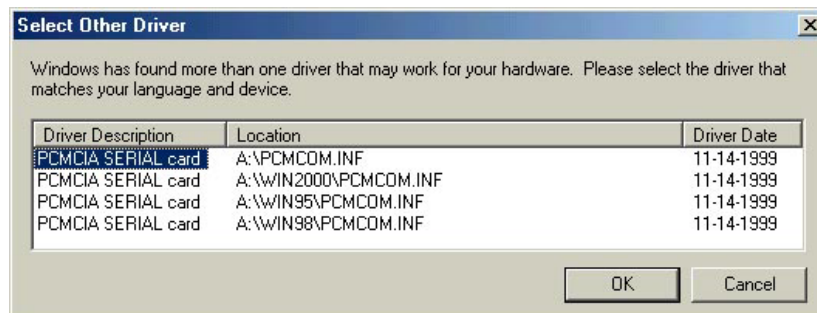
6. Windows will find and install a Communications Port automatically.
7. To check whether the Serial PC Card is installed properly, please click Start ⇒ Settings ⇒ Control Panel ⇒ System ⇒ Device Manager. Refer to the below picture, a “PCMCIA SERIAL card” should be listed under “Ports (COM&LPT)”.



**\*\* Change the resources of “PCMCIA SERIAL card” if the IRQ or I/O Range is conflict.**

## SOFTWARE INSTALLATION FOR WINDOWS Me

1. Insert the Serial PC Card into the PCMCIA socket, the “Add New Hardware Wizard” dialog box appears.
2. Insert the Serial PC Card device driver diskette into your floppy drive.
3. Check “Automatic search for better driver (Recommended)”, and click *Next*.
4. After Windows search for the content of this driver diskette, a list of all available drivers will appear as below. Select “A:\PCMCOM.INF”, and then click *OK*.

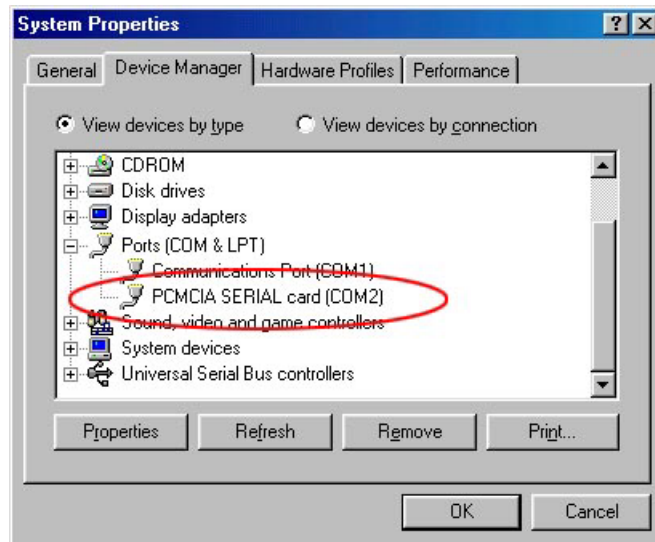


5. After the necessary files are copied into hard disk, click on *Finish*.



6. Windows will find and install a Communications Port automatically.

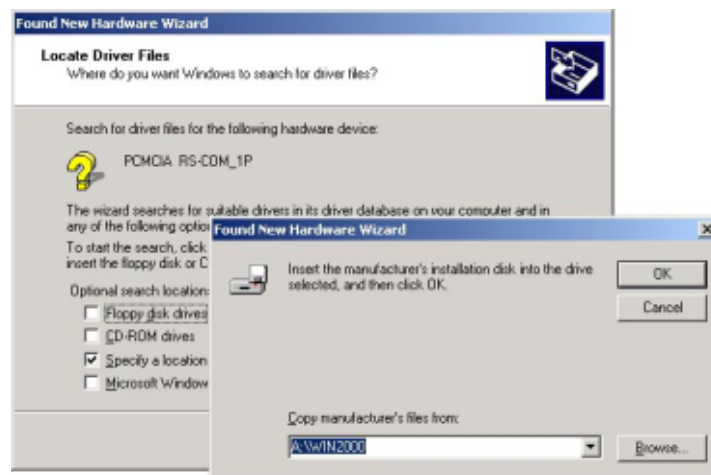
7. To check whether the Serial PC Card is installed properly, please click Start ⇒ Settings ⇒ Control Panel ⇒ System ⇒ Device Manager. Refer to the below picture, a “PCMCIA SERIAL card” should be listed under “Ports (COM&LPT)”.



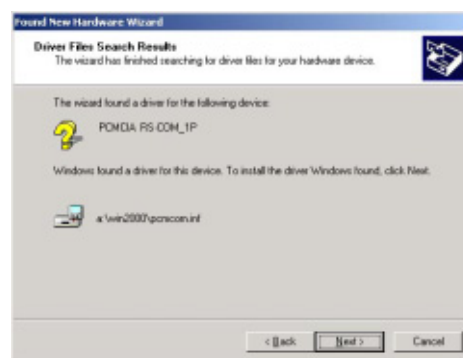
**\*\* Change the resources of “PCMCIA SERIAL card” if the IRQ or I/O Range is conflict.**

## SOFTWARE INSTALLATION FOR WINDOWS 2000

1. Insert the Serial PC Card into the PCMCIA socket, the “Found New Hardware Wizard” dialog box appears. Click *Next*.
2. Check “Search for a suitable driver for my device”, and click *Next*.
3. Only select “Specify a location”, leave the check box of the other locations be empty (don’t select them). Insert the device driver diskette into your floppy drive, and click *Next*. When the “Wizard” asks for the path, type “A:\WIN2000” (exclude the quotation marks) in the “Copy manufacturer’s files from” location, click *OK*.



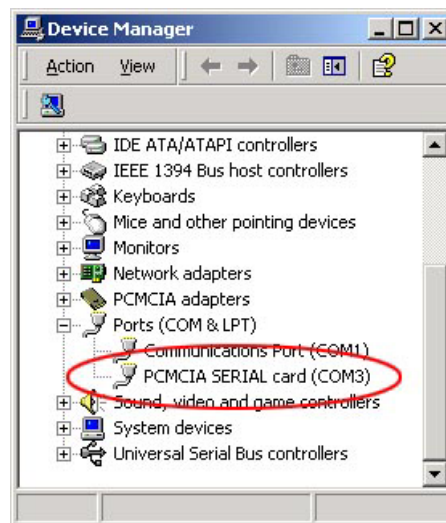
4. On the next screen, a suitable device driver is found. Make sure the file that Windows found is “A:\WIN2000\PCMCOM.INF”, click *Next*.



5. After the necessary files are copied into hard disk, click *Finish*.



6. Windows will find and install a Communications Port automatically.
7. To check whether the Serial PC Card is installed properly, please click Start ⇒ Settings ⇒ Control Panel ⇒ System ⇒ Hardware ⇒ Device Manager. Refer to the below picture, a “PCMCIA SERIAL card” should be listed under “Ports (COM&LPT)”.



**\*\* Change the resources of “PCMCIA SERIAL card” if the IRQ or I/O Range is conflict.**

## SOFTWARE INSTALLATION FOR WINDOWS NT

1. Because Windows NT doesn't support Plug-and-Play function, your Serial PC Card must be inserted before the computer is powered on.
2. Insert the Serial PC Card into the PCMCIA socket, power-on the computer and boot into Windows NT.
3. Windows NT will automatically detect the presence of the Serial PC Card and recognize it as a COM port
4. The available COM ports settings are: COM1 => 3F8, COM2 => 2F8, COM3 => 3E8, COM4 => 2E8.
5. The IRQ could be one of 3,4,5,7,9,10,11,12,15, and will be auto detected by the system.

### **Basic Serial-Port Settings**

Use the Settings dialog box to specify the baud rate, data bits, parity, stop bits, and flow-control settings for the selected serial port.

To specify serial-port settings:

1. In Control Panel, double-click the Ports icon.
2. Click the port and then click *Settings*.
3. To display the options for each setting, click the arrow to the right of each box.
4. Set the options to match the device connected to the port.
5. Click *OK*, and then click *Close*.

*For help with the Settings dialog box, click Help or press F1 while using the dialog box.*

## Advanced Serial-Port Settings

Use the Advanced Settings dialog box to specify an interrupt request number (IRQ) for your serial port, change the communication port number of a port, and specify to use buffering of incoming data to increase performance.

To set advanced port options:

1. In Control Panel, double-click the Ports icon.
2. Click the port and then click *Settings*.
3. Click *Advanced*.
4. Change the port number of a port (the available settings are COM1 to COM4).
5. To use buffering of incoming data and enable some additional functionality on newer COM ports, select the FIFO Enabled check box.
6. Click *OK*.
7. Any changes you make will not take effect until you restart Windows NT. To make your changes take effect now, click *Restart Now*.

*For help with the Settings and Advanced Settings dialog boxes, click Help or press F1 while using the dialog boxes.*

## SOFTWARE INSTALLATION FOR DOS/WINDOWS 3.1

### Automatic Installation

Follow the instructions below to proceed with automatic installation.

1. Insert the device driver diskette into your floppy disk drive.
2. Change the working directory to the floppy drive containing the device driver diskette by typing "A:" or "B:" then press *ENTER*.
3. At the DOS prompt, type 'INSTALL' followed by the *ENTER* key.
4. Press *ENTER* when the opening screen appears. On the next screen, press *TAB* to highlight "Continue" and press *ENTER*, a dialog box will display the following:
  - 1) The directory to install the device driver. Type the directory, then press the *TAB* key to forward to the next field.
  - 2) The COM port or I/O port address. Select the port, and then press *TAB* key to forward to the next field.
  - 3) The IRQ number. Select the IRQ number and then press *TAB* key to forward to the next field.
5. Press *TAB* to highlight "Install" and press *ENTER*, the rest of the installation should proceed automatically, and the CONFIG.SYS and AUTOEXEC.BAT files on your computer will be updated.
6. After completing, remember to REBOOT your system.

### Manual Installation

You may also manually install the device driver by performing the following procedure.

1. Copy the file ARICOM.EXE from the device driver disk to your hard disk.
2. Add the following lines to the bottom of your CONFIG.SYS file:

```
DEVICE=drive:\path\ARICOM.EXE /Cx /Iy
```

Where *drive:\path* specifies the directory containing the file ARICOM.EXE.

ARICOM.EXE is the device driver for the PCMCIA Serial PC Card. The parameters of ARICOM.EXE are described below:

**/C** is used to select the COM port, and the valid numbers are 1(3F8-3FF), 2 (2F8-2FF), 3 (3E8-3EF), and 4 (3F8-3FF). The “**x**” can be 1 ~ 4.

**/I** is used to set the IRQ number. The valid IRQs are 3, 4, 5, 7, 9, 10, 11, 12 and 15, the “**y**” can be one of above numbers.

Example:

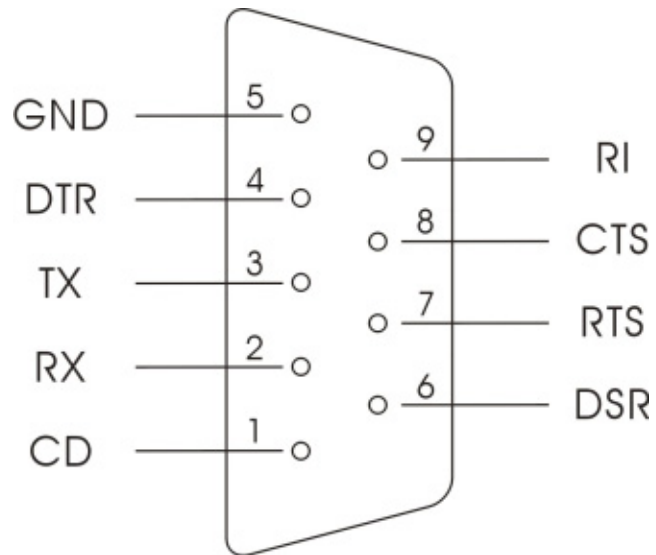
**DEVICE=drive:\path\ARICOM.EXE /C2 /I10**

The above command will recognize the PCMCIA Serial PC Card as:  
**COM2 (I/O range= 2F8 ~ 2FF), and IRQ= 10.**

**Note:**

If your computer has been loaded with ExCA compliant PCMCIA software, then you are allowed to hot insert/remove the Serial PC Card, which means you can connect/remove the Serial PC Card all the time without rebooting your system. If your system doesn't have the software, however, each time you remove the card and need to use it again, you have to type **ARICOM.EXE /Cx /Iy** at DOS prompt to enable the Serial PC Card.

## PIN ASSIGNMENT



Pin No.	Pin Assignment	Description
1	CD	Carrier Detect
2	RX	Received Data
3	TX	Transmitted Data
4	DTR	Data Terminal Ready
5	GND	Ground
6	DSR	Data Set Ready
7	RTS	Request to Send
8	CTS	Clear to Send
9	RI	Ring Indicator





P/N: 7450362-00  
Printed in Taiwan